

H&M, Kallang Wave-Sports Hub Mall Singapore

Project Name

H&M,
Kallang Wave-Sports Hub Mall – Singapore

Installer

Coating and Lining
Technologies Pte Ltd – Singapore

Architect

H&M – Singapore HQ

Featured Products

ARDEX A 35 Rapid Set Screed Cement
ARDEX R2SE Solvent Free Epoxy Primer
ARDEX R 25 SE Self-Smoothing Epoxy
Floor System

Challenge

- 200 m² installation area
- Four – day installation time frame
- Store located on ground level with risks for moisture in slabs
- Multiple trades on the job site

Situation

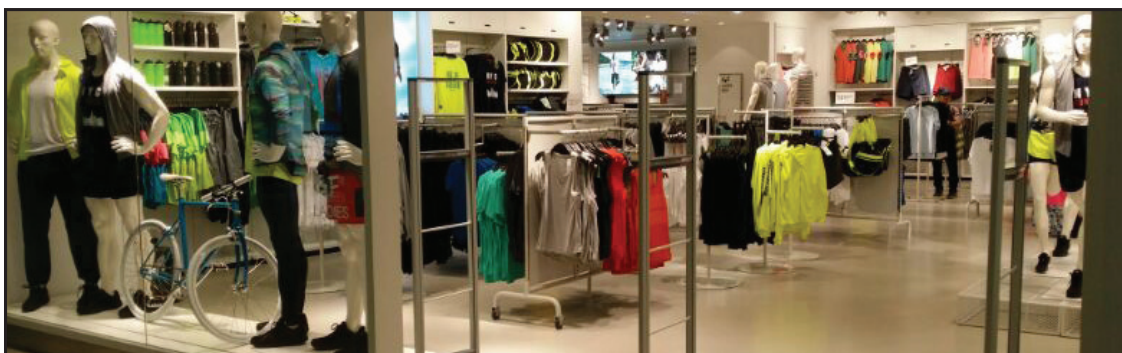
H&M Singapore was opening a retail space in the Kallang Wave Mall within Singapore Sports Hub. The distance from the subfloor to the finished floor top level was more than 50 mm and not level. The store was located on the ground floor of the mall putting it at risk for moisture issues. Tile installers, heating, vent and air conditioning installers and painting trades functioned simultaneously and had to complete work in four days.

Solution

To remedy the uneven subfloor, Coating and Lining Technologies used ARDEX A 35 Rapid Set Screed Cement to create an unbonded surface. ARDEX A 35 Rapid Set Screed Cement provides an instant floor, receiving most finished floor materials after only 24 hours. ARDEX A 35 can also be installed as an unbonded screed layer without warping risk. Next, ARDEX R2SE Solvent Free Epoxy Primer was used to seal the substrate preventing air coming out from cement screed pores. ARDEX R 25 SE Self-Smoothing Epoxy coating was installed at varying thicknesses of 2 to 3 mm with no blistering or air bubbles. ARDEX R 25 SE combines outstanding wearing properties with chemical resistance and decorative properties. Ideally suited in areas where a seamless, joint free finish is required and maximum cleanliness is essential.



International Projects &
Specification Services



For additional information, please contact ipss@ardexamericas.com

ARDEX International Projects and
Specification Services Program

ARD 2214 (10/2014)



YOUR BEST CHOICE FOR
INSTALLATION SUCCESS