



B 30

High strength, cementitious, non-shrink precision grout

DESCRIPTION

B 30 is an advanced, cementitious, structural grout. It has a blend of portland cement, graded aggregates and additives. B 30 is versatile and can be prepared to be of flowable or pumpable consistency by adding the required amount of clean water. This free flowable grout can be used in gap width of minimum 10mm.

USES

B 30 is used in precision grouting of heavy machinery base plates, compressors, generators, and other equipment demanding high strength properties. It is used for grouting of anchor bolts and prefabricated concrete panels. B 30 is also suitable for general bore packing and void filling requirements.

FEATURES

- Controlled expansion ensures rigid bond between base plate & concrete foundation.
- Versatile: can be prepared to be of flowable or pumpable consistency.
- Chloride free and non-corrosive
- High compressive strength
- Suitable for grouting operations of gap width of 10mm - 100mm.

PHYSICAL PROPERTIES

B 30 @ 27 ± 1°C

Water / Powder Ratio

Pourable consistency	0.16
Flowable consistency	0.17
Free flow consistency	0.18

Flow 190 - 220 mm

Time for expansion Start: 15 minutes
Finish: 2 hours

Fresh wet density Approximately 2280kg/m³
depending on actual consistency used

Expansion characteristics An expansion of 2 - 4%
overcomes plastic settlement
in the unset material

VOC Content 5.85 g/l

Compressive strength

Water / Powder Ratio: 0.18
BS: 6319 (Part 2)

1 day	25.0 N/mm ²
3 days	47.0 N/mm ²
7 days	58.0 N/mm ²
28 days	66.0 N/mm ²

Flexural strength

BS: 6319 (Part 3)

1 day	3.0 N/mm ²
3 days	6.0 N/mm ²
7 days	7.0 N/mm ²
28 days	10.0 N/mm ²

Tensile strength

BS: 6319 (Part 7)

28 days	3.7 N/mm ²
---------	-----------------------

Pull out bond strength

7 days	17.0 N/mm ²
28 days	24.0 N/mm ²

Modulus of Elasticity

ASTM C 469-94 40,000 N/mm²

PACK SIZE

25 kg

YIELD

Approx. 13 ltrs for 25kg bag (Free flow consistency)

NOTE: These figures are theoretical, due to the wastages and the variety / nature of substrates practical coverage figures may be reduced.

APPLICATION INSTRUCTIONS:

Substrate Preparation

The substrate must be hard, sound and free of dust, dirt and other loose material. The underside of the base plate should be free of rust, oil, grease or other contaminants that could hinder the bond. The minimum gap width of 10mm should be maintained between the base plate and the foundation. Ensure soaking of the prepared surface with clean water for a minimum of 24 hours before starting of the grouting operation. Prior to grouting remove all standing water using high powered blower taking care to blow out water from the bolt holes and pockets.

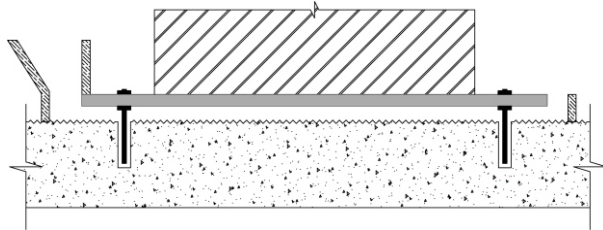
Formwork

Formwork fitted around the base plate should be rigid and watertight to prevent grout loss. The top of the formwork should be a minimum 25mm above the bottom level of the base plate. On the pouring side (which should be the shortest distance along the base plate), the formwork should be minimum 150 mm high to allow a head of grout to build up. The grout head must be achieved at all times during the grouting operation to eliminate air pockets. Ensure continuous grouting operation without stoppage.

Generally, the gap width between the base plate and the formwork is maintained at 100-150mm on the pouring side and 50mm on the opposite side. Whenever possible, gap between the base plate and formwork should be avoided at the shoulders as unrestrained grouts have a tendency to crack.

B 30

High strength, cementitious, non-shrink precision grout



Mixing

Add 90% of the pre-measured mixing water in a clean container and then slowly add B 30. Mix thoroughly for 3 minutes using a heavy duty slow speed drill (400-600 rpm). Then add the remaining 10% water and continue mixing for another 2 minutes. This will ensure a smooth even consistency of the grout. Place the grout immediately after mixing.

Note: It is recommended to keep the water temperature below 25°C for long working time of the grout.

Pourable consistency @ w/p ratio of 0.16

Flowable consistency @ w/p ratio of 0.17

Free flow consistency @ w/p ratio of 0.18

Placing of Grout

Ensure that sufficient grout mix is prepared and ready for the work. The bolt pockets must be first grouted before grouting between the base plate and substrate. Continuous grout flow is essential to ensure no air pockets are formed. Ensure that the grout reaches the other end of the formwork and overflows to release any trapped air.

CURING

On completion of the grouting operation, exposed areas should be thoroughly cured either with wet hessian or with C 20 curing compound.

STORAGE AND SHELF LIFE

B 30 has a shelf life of 6 months if kept in a dry, clean store between 5°C and 30°C in the original unopened containers. The product should be protected from frost, away from direct sunlight and sources of heat.

PRECAUTIONS

Avoid contact with eyes and prolonged contact with the skin. Care should be taken to avoid inhalation or ingestion of dust and prevent contact with the eyes. In case of contact with eyes, flush with ample amount of clean water and seek medical advice if necessary.

DISPOSAL/SPILLAGE

Spillage of the product should be absorbed onto sand or other inert materials and transferred to a suitable disposable vessel. Disposal of such spillage or empty packaging should be in accordance with local waste disposal authority regulations.

For further information please refer to the Material Safety Data Sheet.

CONDITIONS OF SALE

Sold subject to the Company's conditions of sale which are available on request.

NOTE

The information supplied in this datasheet is based upon extensive experience and is given in good faith in order to help you. Our Company policy is one of continuous Research and Development; we therefore reserve the right to update this information at any time without prior notice. We also guarantee the consistent high quality of our products. However, as we have no control over site conditions or the execution of the work, we accept no liability for any loss or damage which may arise as a result thereof.

ARDEX ENDURA (INDIA) PRIVATE LIMITED

an ISO 9001:2015 & ISO 14001:2015 certified company
Corporate Office & Regd. Office: Unit No. 406 & 407,
"Brigade Rubix" No. 20, HMT Campus,
Yeshwanthpur Hobli, Bengaluru - 560013.
CIN No: U24233KA1997PTC022383 Tel: +91 80 66746500
Email: customercare@ardexendura.com
Website: www.ardexendura.com

Branches

• AHMEDABAD	079 26425310	• HUBBALLI	0836 2970505	• NAGPUR	+919822223743
• AURANGABAD	+918605445577	• HYDERABAD	040 48559455	• PATNA	+919934687909
• BENGALURU:	080 40912934	• INDORE	0731 4021148	• PUNE	+919028811555
• BHUBANESHWAR	0674 2578101	• JAIPUR	0141 2441893	• RAIPUR	0771 4038300
• CALICUT	0495 2740334	• KOLKATA	+919831071084	• SALEM	0427 2271454
• CHENNAI	044 42805544	• LUCKNOW	0522 4043251	• SHIVAMOGGA	+919880605770
• DELHI	011 26384711	• LUDHIANA	0161 2532170	• TRICHY	+919894766109
• ERNAKULAM	0484 2341044	• MANGALURU	0824 2442176	• TRIVANDRUM	0471 2598648
• GOA	0832 2750992	• MUMBAI	022 65133299	• VIJAYAWADA	+918688354587
• GUWAHATI	+917896002188	• MYSURU	0821 2570171	• VISAKAPATNAM	0891 6469499

