



Complete Solution for Protecting Your Dream HOME



www.ardexendura.com

ARDEX - A GLOBAL KEY PLAYER IN HIGH-PERFORMANCE SPECIALTY BUILDING MATERIALS

The company's heritage dates back more than 70 years and, as a global manufacturer of high performance specialty building materials, ARDEX has remained at forefront of the world's leading suppliers for the building & construction industries. The ARDEX name has been synonymous with innovative, premium quality products and services globally for many decades. Strong internal growth and intelligent acquisitions have put the ARDEX Group on the world map with 53 Group Companies and in over 50 countries across five continents.

ARDEX ENDURA - INDIA

BAL ENDURA ADHESIVES (INDIA) PVT LTD was re-branded as ARDEX ENDURA (INDIA) PVT LTD after the joint venture between ARDEX Group, Germany and Prism Johnson Limited, India.

With the guidance and support from the ARDEX group, ARDEX ENDURA remains the quality leader in the industry, offering excellent building chemicals with supreme processing reliability. With strategically positioned branches & state-of-the-art manufacturing plants all over India, ARDEX ENDURA develops products you can trust and rely on. The comprehensive portfolio of products encompasses



Tiling & Stone Care products, Industrial & Commercial Flooring Solutions, Resilient Flooring Adhesives, Waterproofing Systems, Concrete Repair and Decorative finishes.

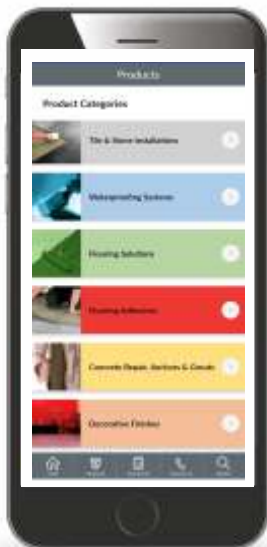
**“Our vision is to be one of the world's leading solution providers
of high performance specialty building materials”**



ARDEX ENDURA is committed to providing Continuing Professional Development (CPD) Seminars that allow our customers to improve and broaden their knowledge and skills base within construction industry.

The ARDEXENDURA academy has been created to ensure that the knowledge gained through the seminars and hands-on trainings will have a positive impact on an attendee's ability to implement best practice, leading to an increase in the quality of work carried out on-site.

SUPPORT SERVICES



The ARDEX ENDURA app is an optimised version of the website and hosts a variety of helpful features in the palm of your hand.

Just search for “ARDEX ENDURA” on google Play store. Alternatively, scan the QR code below to download.



Scan and download
our Android app



INDEX

Protection Systems

Bathroom Protection System
Terrace Protection System
Balcony Protection System
Swimming Pool Protection System
External Facade Protection System

Tile Adhesive

TA	14
Bronze Star	14
S 15 C	15
Silver Star	15
Silver Star Plus	16
Gold Star	16
White Star	17
Diamond Star	17
Diamond Star Plus	18
Platinum Star	18
Platinum Star Plus	19
Flex	19
ArdiFlex PU 5	20
M 15	20
ADMIX AD1	21
ArdiFlex ADMIX	21
Advantages of ARDEX ENDURA Adhesives	22
Adhesive Mixing & Application	23
Adhesive Selector	24

Tile Joint Grout

Cement Polymer Grout	26
Super Grout	26
Wide Joint Grout	27
Epoxy Grout	27
WA D	28
ADMIX GT1	28
Tools & Tackles	29
Grout Selector	30
Mixing & Application	
- Cementitious Grout	31
- Epoxy Grout	32
- WA D	33

INDEX

Tile & Stone Care

Sealers

- Heavy Duty Impregnating Tile & Stone Sealer	34
- Impregnating Tile & Stone Sealer	34
- FC SS	35
- FC Sealer	35
- Under Tile & Stone Primer	36

Cleaners

- CP Fitting & Sanitary Cleaner	37
- Heavy Duty Tile Cleaner	37
- Non Acidic Cleaner	38
- Marble & Stone Cleaner	38
- Power Cleaner	39

Waterproofing Systems

WPM 004	40
WPM 004 Flex	40
WPM 002	41
WPM 300	41
WPM 310	42
E 160	42

Concrete Ancillary

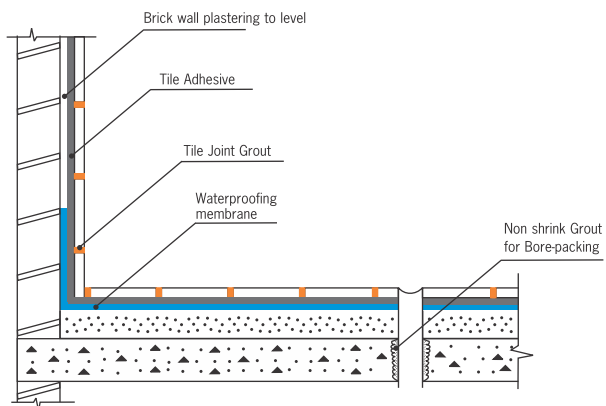
E 125	43
E 135	43
B 30	44
B 33	44
B 35	45
EP 300	45
EP 410	46
EP 310 F	46
SU 10	47
ACF 8	47
F 30	48

Flooring Solution

A 45	49
Feather Finish	49

Our Valued Clientele	50
----------------------------	----

Bathroom Protection System



SYSTEM:

Non Shrink Grout: **B 30**

Waterproofing: **WPM 004**

Tile Adhesive: **Silver Star**

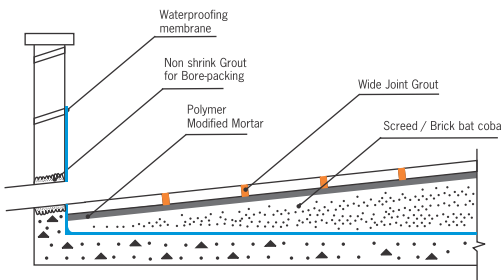
Tile Joint Grout:

Cement Polymer Grout

Terrace Protection System



New Terrace



SYSTEM:

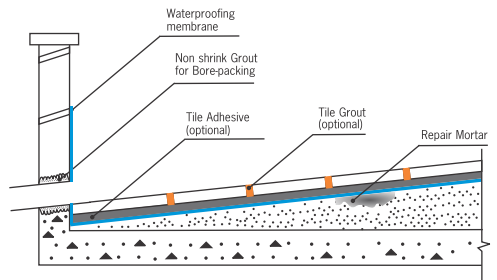
Non Shrink Grout: [B 30](#)

Waterproofing: [WPM 265 Primer](#) + [WPM 004 FLEX](#)

Polymer Modified Mortar: [E 135](#)

Tile Grout: [Wide Joint Grout](#)

Existing Terrace



SYSTEM:

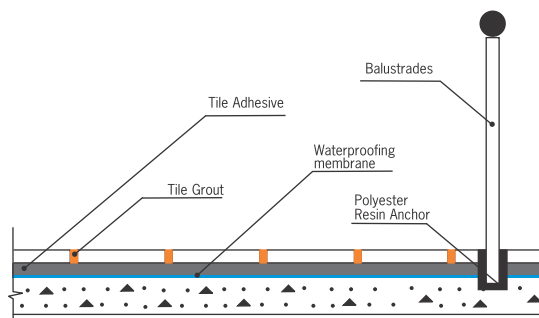
Polymer Modified Mortar: [E 135](#)

Tile Adhesive: [Gold Star](#)

Tile Grout: [Wide Joint Grout](#)

Waterproofing: [WPM 265 Primer](#) + [WPM 004 FLEX](#)

Balcony Protection System



SYSTEM:

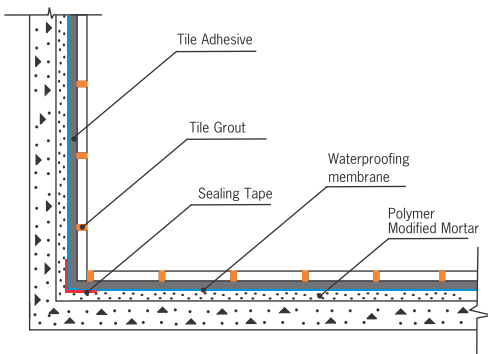
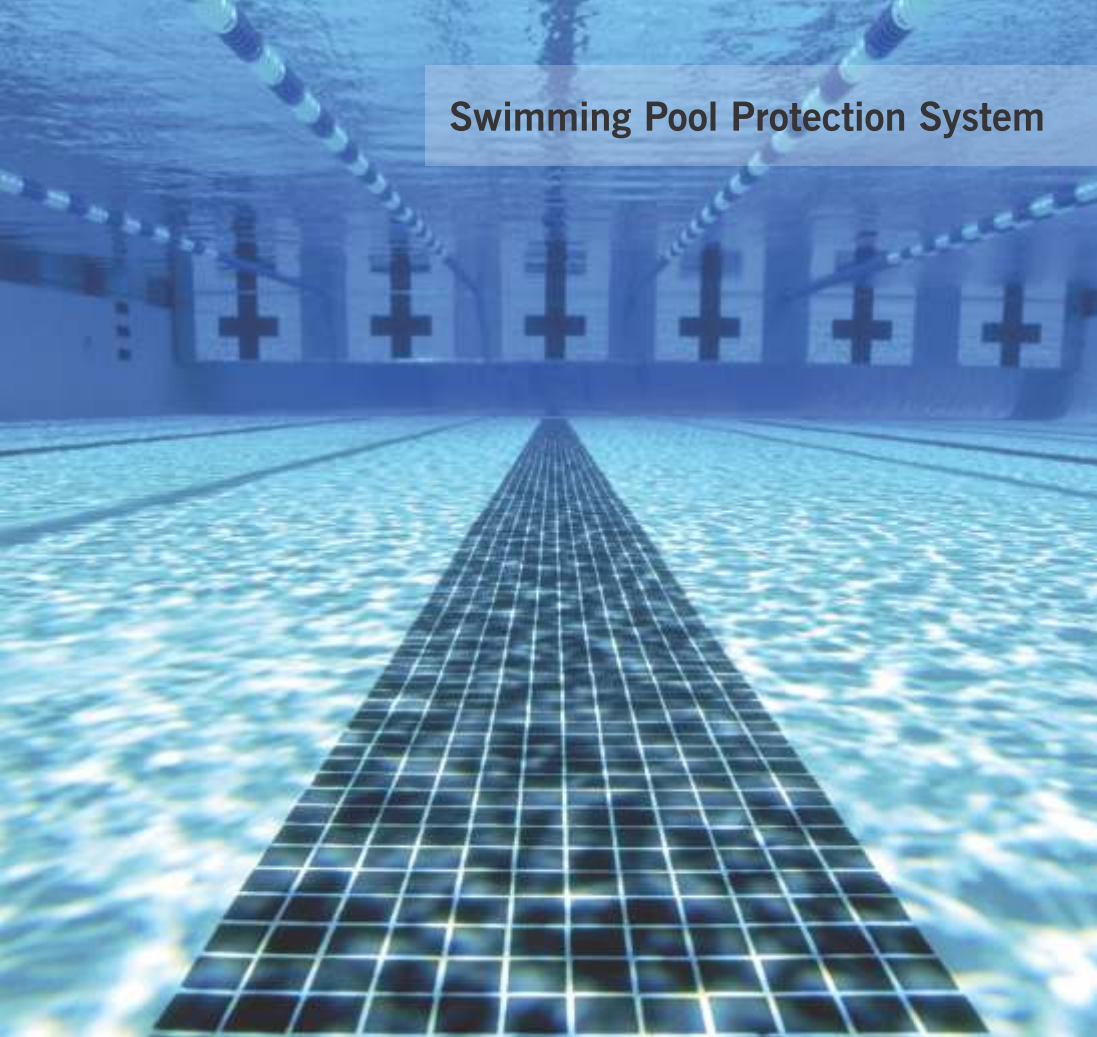
Polyester Resin Anchor Grout: [EP 310](#)

Waterproofing: [WPM 265 Primer + WPM 004 FLEX](#)

Tile Adhesive: [Gold Star](#)

Tile grout: [Cement Polymer Grout](#)

Swimming Pool Protection System



SYSTEM:

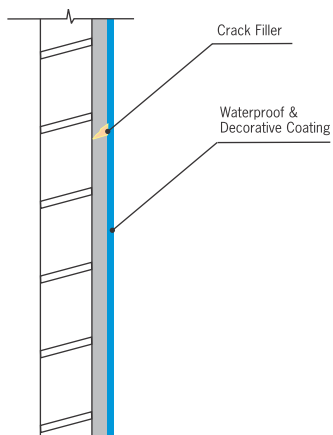
Polymer Modified Mortar: [E135](#)

Waterproofing: [WPM 300 Primer + WPM 002](#)

Tile Adhesive: [Diamond Star](#)

Tile grout: [Epoxy Grout](#)

External Facade Protection System



SYSTEM:

Crack Filler: [ACF 8/F 30](#)

Primer: [WPM 265/WPM 300](#)

Waterproof & Decorative Coating: [WPM 310](#)

A
D
H
E
S
I
V
E
S

WATERPROOFING

GROUTS

PRODUCT

Portfolio

C
L
E
A
N
E
R
S

F
L
O
O
R
I
N
G

SEALERS

CONCRETE REPAIR



Benefits

- Suitable for fixing porous clay & ceramic tiles on walls & floors in interior dry situations
- Polymer modified adhesive
- Easy mixing & application
- For concrete/plaster surface
- Open time of 10mins
- Complies with IS 15477: 2019 Type 1T

TA

General purpose tile adhesive



Coverage Estimates

Pack size	Coverage
20kg	Approx. 1.45 - 1.55 kg/m ² /mm

APPLICATION AREAS

Dry Areas | Interiors
Walls & Floors



Benefits

- Suitable for fixing ceramic tiles on walls & floors in interior situations
- Polymer modified adhesive
- Easy mixing & application
- For concrete/plaster surface
- Suitable for fixing ceramic tiles on walls & floors
- Complies with IS 15477: 2019 Type 1T

BRONZE STAR

Polymer modified adhesive



Coverage Estimates

Pack size	Coverage
20 kg	Approx. 1.45 - 1.55 kg/m ² /mm
Available only in Kerala & Tamil Nadu	

APPLICATION AREAS

Dry Areas | Interiors
Walls & Floors

S 15 C

Cement based adhesive for use
by wet-on-wet method



Benefits

- Good bond strength
- Longer working time compared to cement slurry
- Economical: Suitable for tiling on fresh screed
- Open time of 20 to 25mins
- Suitable for fixing vitrified tiles, ceramic tiles and stable natural stones



Coverage Estimates

Pack size	Coverage
26 kg	Approx. 3.0 kg/m ² @ 2mm thickness

APPLICATION AREAS

Interior & Exterior floors
Domestic and Commercial floors

15

SILVER STAR

Polymer modified tile adhesive



Benefits

- Good bond strength
- Suitable for fixing ceramic tiles for interior floor & walls
- Open time of 15mins
- Easy mixing & application
- Complies with IS 15477: 2019 Type1T



MES officer's Mess, Indore

Coverage Estimates

Pack size	Coverage
2kg & 20kg	Approx. 1.40 - 1.55 kg/m ² /mm

APPLICATION AREAS

Dry areas | Toilets | Bathrooms

SILVER STAR *Plus*

High polymer modified, cementitious,
tile/stone adhesive



Benefits

- High bond strength
- Easy mixing, smooth application & better workability
- Water resistant
- Open time of 20mins
- Complies with IS 15477: 2019 Type 2T
- Complies with EN 12004: 2017 C1T



Coverage Estimates

Pack size	Coverage
26kg & 20kg	Approx. 1.30 - 1.40 kg/m ² /mm

*Available all India except North & East
26 kg (South) / 20 kg (West & Central)

APPLICATION AREAS

Walls & Floors | Interiors & Exteriors | Dry areas
Wet areas | Showers | Swimming Pools

GOLD STAR

High polymer modified tile/stone adhesive



Benefits

- High bond strength
- Water resistant
- Suitable for vitrified tiles & natural stones for floor & walls
- Suitable for submerged conditions when used with ADMIX AD1
- Open time of 20mins
- Easy mixing & application
- Tile-on-tile works on existing mosaic tiles
- Complies with IS 15477: 2019 Type 2T
- Complies with EN 12004: 2017 C1T



South City International School, Kolkata

Coverage Estimates

Pack size	Coverage
2kg & 20kg	Approx. 1.30 - 1.40 kg/m ² /mm

APPLICATION AREAS

Dry areas | Toilets | Bathrooms | Water bodies
Interiors & Exteriors



Benefits

- High bond strength
- Water resistant
- Suitable for vitrified tiles & natural stones for floor & walls.
- Suitable for submerged conditions when used with ADMIX AD1.
- Open time of 20mins
- Easy mixing & application
- Complies with IS 15477: 2019 Type 2T
- Complies with EN 12004: 2017 C1T

WHITE STAR

White cement based, high polymer modified tile/stone adhesive



Swaminarayan Mandir, Gadhada

Coverage Estimates

Pack size	Coverage
2kg & 20kg	Approx. 1.35 - 1.40 kg/m ² /mm

APPLICATION AREAS

Dry areas | Toilets | Bathrooms | Water bodies
Interiors & Exteriors



Benefits

- Very high bond strength
- Water resistant
- Suitable for tile-on-tile works
- Suitable for fixing glass mosaic & natural stones on floor & walls
- Open time of 20mins
- Available in grey & white colours
- Complies with IS 15477: 2019 Type3T
- Complies with EN 12004: 2017 C2TS1

DIAMOND STAR

High performance, polymer modified, non-slip adhesive



Taj Group, Colombo

Coverage Estimates

Pack size	Coverage
2kg & 20kg	Approx. 1.25 - 1.35 kg/m ² /mm

APPLICATION AREAS

Dry areas | Toilets | Bathrooms
Swimming pools | Interiors & Exteriors



Benefits

- Extended open time of 30mins
- Reduced slip
- High initial grab
- Highly thixotropic with easy application & good workability
- Suitable for fixing ceramic, vitrified & fully vitrified tiles, glass mosaic on floor & walls
- Superior bond strength
- Water resistant
- Complies with IS 15477: 2019 Type4T
- Complies with EN 12004: 2017 C2TS1

Coverage Estimates

Pack size Coverage
20kg & 50kg Approx. 1.22 - 1.30 kg/m²/mm

DIAMOND STAR *Plus*

High performance, polymer modified adhesive with superior bond strength



APPLICATION AREAS

Dry areas | Toilets | Bathrooms
Swimming pools | Interiors & Exteriors



Benefits

- Very high performance and strength
- Flexible adhesive
- Premium multi use adhesive
- Open time of 25mins
- Excellent water and frost resistance
- Excellent tensile & shear adhesion
- Easy mixing, smooth application & better workability
- Complies with IS 15477: 2019 Type 4T
- Complies with EN 12004 : 2017 C2TES1

Coverage Estimates

Pack size Coverage
2kg & 20kg Approx. 1.25 - 1.35 kg/m²/mm

PLATINUM STAR

Premium quality, high polymer modified deformable adhesive



Ashok Garden, Mumbai

APPLICATION AREAS

Dry & wet areas | Showers | Swimming Pools
Hydrotherapy Pools | Heated Screeds



Benefits

- Fibre reinforced for high performance and strength
- Deformable and Good slip resistance required for fixing large format tiles, slim tiles & stable natural stones
- Extended open time of 35mins
- Bed thickness upto 15mm
- Excellent water and frost resistance
- Easy mixing, smooth application & good workability
- Complies with IS 15477: 2019 Type 4TS1
- Complies with EN 12004 : 2017 C2TES1

PLATINUM STAR *Plus*

High performance, fibre reinforced,
deformable tile/stone adhesive



Coverage Estimates

Pack size	Coverage
20 kg	Approx. 1.10 - 1.20 kg/m ² /mm

APPLICATION AREAS

Dry Areas | Walls & Floors | Interior & Exterior
Cementitious floor screed | Existing tiled surface

19

Benefits

- High performance flexible adhesive
- Suitable for wood & metal surface
- High tensile strength
- Water and frost resistant
- Suitable for use in interior and exterior locations
- Suitable for submerged conditions
- Open time of 25mins
- Available in grey & white colours
- Complies with EN 12004: 2017 C2ES2

FLEX

Two component, flexible tile/stone
adhesive for wood & metal surface



Coverage Estimates

Pack size	Coverage
GREY - 15.41 kg	Approx. 5.50 m ² /pack
WHITE - 12.50 kg	Approx. 4.50 m ² /pack

APPLICATION AREAS

Dry & Wet areas | Showers
Walls & Floors | Interiors & Exteriors

Ardiflex PU 5

Modified polyurethane multipurpose adhesive
for tile & stone



Benefits

- Suitable for fixing moisture sensitive stones like artificial or agglomerated marble and natural stone
- High bond strength, chemical resistant
- Reliable bond to impermeable, smooth and vibrating substrates
- Open time of ≥ 90 mins
- Ideal for spas, pools and water features
- Complies with IS 15477: 2019 Type5TS2
- Complies with EN 12004: 2017 R2T



Coverage Estimates

Pack size
8 kg

Coverage
3 kg/m² using 6mm x 6mm
square notch trowel

APPLICATION AREAS

Dry & Wet areas | Metal & Wood
PVC | Interiors & Exteriors

20

M 15

Thin bed adhesive for AAC blocks



Benefits

- Polymer modified adhesive
- Easy mixing & application
- Good adhesion strength
- No curing required
- Open time of 20 - 25 minutes



Coverage Estimates

Pack size
26 kg

Dimension(mm) L x H x W	Approx. Coverage/bag
600 x 200 x 200	3.68m ²
600 x 200 x 150	4.90m ²
600 x 200 x 100	7.35m ²

APPLICATION AREAS

Adhesive for AAC blocks

ADMIX AD1

Liquid polymer additive for use with cement based adhesives



Benefits

- Polymer additive for use with cement based adhesives to enhance the properties and performance.
- Improves flexibility
- Improves water resistance
- Increases adhesion
- Suitable for submerged conditions



Iskcon, Bengaluru

Coverage Estimates

Pack size	Dosage
1 & 5 litres	1litre for every 20kg bag of cement based adhesives

APPLICATION AREAS

As an admix for cement based adhesives

21

ArdiFlex ADMIX

Latex additive for use with ArdiFlex S1

Benefits

- Improves flexibility
- Improves water resistance
- Increases adhesion & bond strength
- Suitable for wet areas & swimming pools
- Suitable for interior & exterior situations
- Achieves the performance criteria of class C2TES2 when used with ArdiFlex S1



Coverage Estimates

Pack size	Dosage
5 litres	A 50 kg bag of ArdiFlex S1 will require approx. 2.5 litres of ArdiFlex ADMIX

APPLICATION AREAS

As an additive for use with ArdiFlex S1

ADVANTAGES OF ARDEX ENDURA ADHESIVES

SAND/CEMENT (TRADITIONAL)	ARDEX ENDURA ADHESIVES
WEAK BOND	STRONG BOND <ul style="list-style-type: none"> - 4 times better than sand/cement
SLOW FIXING RATE	FASTER FIXING RATE <ul style="list-style-type: none"> - 4 times faster than sand/cement
TILES NEED SOAKING <ul style="list-style-type: none"> - MESSY 	TILES ARE FIXED DRY, NO SOAKING <ul style="list-style-type: none"> - NO MESS
THICK BED OF 15 - 40 mm adds to weight / thickness	THIN BED OF APPROX. 2 - 6 mm reduces weight of the structure
RIGID AND SHRINKS <ul style="list-style-type: none"> - cracks due to physical, thermal & moisture movement 	FLEXIBLE, ANTI-SHRINK PROPERTIES <ul style="list-style-type: none"> - allows physical, thermal & moisture movement
LIMITED USE <ul style="list-style-type: none"> - weak or no bond to some materials and backgrounds 	UNIVERSAL USE <ul style="list-style-type: none"> - adhesive range strongly bonds to all materials (tiles, stones) and backgrounds
WATER CURING REQUIRED	INITIAL SET 20 MINUTES, CURES IN 24 HOURS
ADHESION CAN LESSEN OVER TIME	VERY DURABLE BOND
STAINS, SEEPAGE DISCOLOURATION IS POSSIBLE	RESISTANT TO STAINS, SEEPAGE & DISCOLOURATION
POOR WORKABILITY / APPLICATION <ul style="list-style-type: none"> - thin/runny - no 'grab', high slip - poor water retention - short open time - hard to use and apply 	GOOD WORKABILITY / APPLICATION <ul style="list-style-type: none"> - thick/sticky - good 'grab', non-slip - good water retention - long open time - easy to use and apply
VARIABLE QUALITY FINISH	GOOD, CONSISTENT, QUALITY FINISH
VARIABLE MATERIALS <ul style="list-style-type: none"> - poor mixing control 	CONSISTENT, QUALITY PRODUCT <ul style="list-style-type: none"> - easy to mix
HOLLOWNESS BEHIND TILES / STONES & BACKGROUND SURFACE	100% BONDING BETWEEN TILES / STONES & BACKGROUND SURFACE
NOT WATER-RESISTANT	WATER-RESISTANT

MIXING

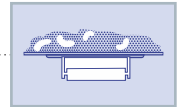
Before starting, ensure the surface is clean from loose particles, dust etc that could hamper a good bond. Take pre-measured clean water in a mixing container. Please refer to the respective technical data sheet for the mixing proportion of adhesive : water.

Add the adhesive to the same container and mix thoroughly until a lump-free homogenous mix is obtained. It is recommended to use slow speed drilling machine fitted with mixing paddle for a homogenous consistency.



APPLICATION

1. Spread the mixed adhesive on the wall/floor, using the flat edge of the square notch trowel. Spread not more than the area which can be tiled within the open time of the adhesive.
2. Comb the adhesive using the ribbed edge/notch side edge to the required thickness using a suitable square notch trowel holding the trowel at 45° - 50° to the surface.
3. Press the tiles firmly into position with a slight twisting action, checking periodically that good contact is maintained with the back of each tile. Leave adequate joints between individual tiles. Use ARDEX ENDURA spacers for uniform joint width.
4. Tiles should be fixed and adjusted within the specified time of the adhesive being applied. Touch the adhesive ribs periodically and if a skin has formed, remove the adhesive and apply a new layer.
5. Clean off surplus adhesive from the tile face and between joints.



ADHESIVE SELECTOR

Coverings						
	Size in mm	Concrete	CM plaster	Screed	Wood / Plywood	Gypsum boards
Ceramic tiles						
	< 600X600	SS*/TA/BS	SS*/TA/BS	SS*/TA/BS	FX/PU 5	FX/PU 5
Vitrified tiles						
	< 600X600	GS*/SSP	GS*/SSP	GS*/SSP	FX/PU 5	FX/PU 5
	> 600X600	GS***/SSP	GS***/SSP	GS***/SSP	FX/PU 5	FX/PU 5
Clay tiles		GS*/SSP	GS*/SSP	GS*/SSP	FX/PU 5	FX/PU 5
Glass mosaic tiles		DS	DS	DS	FX/PU 5	FX/PU 5
Granites						
	< 600X600	GS*/SSP	GS*/SSP	GS*/SSP	FX/PU 5	FX/PU 5
	> 600X600	GS***/SSP	GS***/SSP	GS***/SSP	FX/PU 5	FX/PU 5
Marbles						
	< 600X600	WS	WS	WS	FX/PU 5	FX/PU 5
	> 600X600	WS	WS	WS	FX/PU 5	FX/PU 5
Metal tiles		DS/PU 5	DS/PU 5	DS/PU 5	FX/PU 5	FX/PU 5
Glass tiles		PS/DSP	PS/DSP	PS/DSP	FX/PU 5	FX/PU 5
Engineered stones^						
	< 600X600	S1/PU 5/PSP	S1/PU 5/PSP	S1/PU 5/PSP	FX /PU 5	FX/PU 5
	> 600X600	S1/PU 5/PSP	S1/PU 5/PSP	S1/PU 5/PSP	FX/PU 5	FX/PU 5
Slim tiles						
	> 600X600	S1/S2 /PSP	S1/S2 /PSP	S1/S2 /PSP	WA/S2/PU 5	S1/S2/PU 5
Acid resistant tiles		FR	FR	FR		

Product Name

SILVER STAR	SS
SILVER STAR PLUS	SSP
GOLD STAR	GS
DIAMOND STAR	DS
DIAMOND STAR PLUS	DSP
PLATINUM STAR	PS
PLATINUM STAR PLUS	PSP
FLEX	FX
F R	FR
WA 91	WA
ArdiFlex S1	S1
ArdiFlex S2	S2
ArdiFlex PU 5	PU 5

- * Use in conjunction with ADMIX AD1.
- ^ Use in conjunction with UNDER TILE & STONE PRIMER.
- # Use CM screed & S 15 C adhesive to raise floor level and cover the undulations as wet on wet system.
- Note:**
- In wet areas use ARDEX ENDURA WATERPROOFING SYSTEM.
 - Mixing of adhesive shall be carried out by using mechanical means.
 - Do not use Silver Star in external situation and submerged conditions.
 - Use GS*/ DS/ PS in submerged conditions.

Substrates							
	Metal	Kota stones	Ceramic tiles	Vitrified tiles	Marbles	Granites	GRP / FRP
	FX	GS/SSP	GS*/SSP	GS*/SSP	GS*/SSP	GS*/SSP	WA/PU 5
	FX	GS/SSP	GS*/SSP	GS*/SSP	GS*/SSP	GS*/SSP	WA/PU 5
	FX	GS/SSP	GS*/SSP	GS*/SSP	GS*/SSP	GS*/SSP	WA/PU 5
	FX	GS/SSP	GS*/SSP	GS*/SSP	GS*/SSP	GS*/SSP	
	FX		DS	DS	DS	DS	WA/PU 5
	FX	GS/SSP	GS*/SSP	GS*/SSP	GS*/SSP	GS*/SSP	
	FX	GS/SSP	GS*/SSP	GS*/SSP	GS*/SSP	GS*/SSP	
	FX	GS*/SSP	GS*/SSP	GS*/SSP	GS*/SSP	GS*/SSP	
	FX	GS*/SSP	GS*/SSP	GS*/SSP	GS*/SSP	GS*/SSP	
	FX	DS/PU 5	DS/PU 5	DS/PU 5	DS/PU 5	DS/PU 5	PU 5
	FX	PS/DSP	PS/DSP	PS/DSP	PS/DSP	PS/DSP	
	FX	S1/PU 5/PSP	S1/PU 5/PSP	S1/PU 5/PSP	S1/PU 5/PSP	S1/PU 5/PSP	PU 5
	FX	S1/PU 5/PSP	S1/PU 5/PSP	S1/PU 5/PSP	S1/PU 5/PSP	S1/PU 5/PSP	PU 5
	WA / S2	S1/S2/PSP	S1/S2/PSP	S1/S2/PSP	S1/S2/PSP	S1/S2/PSP	PU 5
		FR					

- Do not use the shower for at least 2 weeks following the completion of grouting.
- Do not fill pool for at least 3 weeks following completion of grouting.
- Use white colour adhesive for the installation of translucent stones.
- All tiles/stones are recommended to have joints width of 2 - 3mm.
- Always check the chemicals concentration and strength prior using FR for chemical resistance.
- Dry walls should be screwed to frame at 300 mm centres vertically and horizontally.
- Suitable clamps shall be used to install the tile/stone at height more than 20 feet (6.6m).
- Movements joints shall be left at every 10 feet (3.3m) interval vertically to accommodate the shrinkage and expansion of the substrate.
- Do not apply to substrates that have a temperature of less than 12°C or greater than 40°C. ArdiFlex PU 5 should not be used on the substrate having rising moisture problem or moisture content of more than 4%.

CEMENT POLYMER GROUT

Polymer modified grout for
wall & floor tile joints



Benefits

- Good bond strength
- Available in range of colours
- Water resistant
- Suitable for joint width of 1 - 6 mm
- For interior & exterior use
- Conforms to overall Migration Test specifications as per USFDA - 175.300, certified by CFTRI

Pack size

500g, 1kg & 10kg

APPLICATION AREAS

Dry areas | Toilets | Bathrooms
Swimming pools (to be used with ADMIX GT1)

SUPER GROUT

High polymer modified,
water & stain resistant grout



Benefits

- Excellent water repellent property
- High bond strength
- Better efflorescence and stain resistance
- Suitable for joint width of 1 - 6 mm
- Non-shrink
- Available in a range of colours
- Conforms to overall Migration Test specifications as per USFDA - 175.300, certified by CFTRI

Pack size

1kg

APPLICATION AREAS

Dry areas | Toilets | Bathrooms | Commercial Spaces
Swimming pools (to be used with ADMIX GT1)



WIDE JOINT GROUT

Polymer modified grout for wide joints



Benefits

- Provides high strength and durable joints
- Water resistant
- Water based - easy to be cleaned from tiled surface
- Suitable for joint width of 3 - 12 mm
- Available in Grey & white

*(For other colours please contact ARDEX ENDURA Representative)



College of Architecture, Trivandrum

Pack size

10kg

APPLICATION AREAS

Dry Areas | Terraces | Podiums | Walls & Floors
Interiors & Exteriors | Commercial Spaces

27

EPOXY GROUT

High Performance Epoxy Tile Grout



Benefits

- Hygienic and chemical resistant
- Stain and bacterial resistant
- Provides High strength and durable joints
- Suitable for submerged conditions
- Suitable for joint width of 1 - 12mm
- Can be cleaned off in 15 minutes and up to 60 minutes after application
- Available in range of colours
- Conforms to the Global Migration Test laid by USFDA -175.300 for intended use for contact with aqueous food & beverage (water based) products.
- Exceeds EN 13888 standards



Pack size

1kg & 5kg

APPLICATION AREAS

Dry areas | Toilets | Bathrooms | Swimming pools
Commercial spaces | Hygienic & Sterile areas
Chemical resistance areas

WA D

High performance epoxy grout
with SPARKLING effect



Benefits

- Decorative
- Good aesthetic finish
- Hygienic and chemical resistant
- Stain and bacterial resistant
- Provides High strength and durable joints
- High abrasion resistant
- Suitable for joint width of 2 - 20mm
- Available in Gold, Silver & Bronze colours

Pack size

1kg & 5kg

APPLICATION AREAS

Showrooms | Toilets | Bathrooms | Commercial Spaces

28

ADMIX GT1

Liquid polymer additive for use with
cement polymer grouts



Benefits

- Improves the flexibility for Cement Polymer Grouts, Super Grouts & Wide Joint Grouts
- Improves water resistance
- Improves the adhesion strength
- Increase the abrasion resistance of Grouts

Coverage Estimates

Pack size	Dosage
100ml & 1litre	100ml for every 1kg of Cement Polymer Grouts, Super Grouts & Wide Joint Grouts

APPLICATION AREAS

As an admix for cement based tile joint grout

TOOLS & TACKLES



Thin-Bed Metal Notch Trowels



Thick-Bed Metal Notch Trowels



Grout Rake



Spacers 2, 3, 4, 5, 8 & 10 mm

GROUT SELECTOR

AREAS OF APPLICATION	GROUT SELECTOR	CEMENT POLYMER GROUT	SUPER GROUT	WIDE JOINT GROUT	EPOXY GROUT	WA D
	Walls	✓	✓	✓	✓	✓
	Floors	✓	✓	✓	✓	✓
	Interior	✓	✓	✓	✓	✓
	Exterior	✓	✓	✓	✓	✓
	Dry areas	✓	✓	✓	✓	✓
	Wet areas				✓	
	Showers	✓(1), (3)	✓(1)	✓(1)	✓(5)	
	Swimming Pools	✓(2), (3)	✓(2), (3)	✓(2), (3)	✓(3)	
	Heavily Trafficked Floors	✓(3)	✓(3)	✓(3)	✓	
	Hygienic and Sterile areas			✓	✓	✓
PROPERTIES	Chemical Resistance Areas			✓	✓	
	Joint width	1 - 6mm	1 - 6mm	3 - 12mm (4)	1 - 12mm	2 - 20mm
	Pot Life	30 min.	30 min.	45 min.	45 min.	45 min.
	Setting Time	24 hours	24 hours	24 hours	24 hours	48hours
	Wet density	1.80	1.80	1.90	1.70	1.75

✓ = Suitable

- (1) Not recommended for use in power showers, use EPOXY GROUT.
Do not use showers for at least 2 weeks following completion of grouting.
- (2) Do not fill pool at least 3 weeks following completion of grouting.
- (3) Use in conjunction with ADMIX GT1. (See datasheet of ADMIX GT1 for further details).
The addition of ADMIX GT1 to cement-based GROUTS will enhance adhesion to tile edges, reduce water permeability and imparts flexibility.
- (4) Up to 20 mm when used in conjunction with ADMIX GT1
- (5) Do not use showers for at least 2 weeks following completion of grouting.

Refer to the theoretical coverage calculation below:

(Tile length + Tile breadth) x Tile thickness x Joint width x Wet density

(Tile length + Joint width) x (Tile breadth + Joint width)

= kg/m²

All the dimensions are in mm

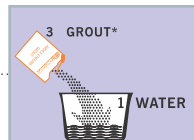
MIXING & APPLICATION

CEMENT POLYMER GROUT, SUPER GROUT & WIDE JOINT GROUT

MIXING

Before commencing grouting, ensure that the adhesive is set. Clean the joints free of all adhesive and any other contaminants using grout raker.

Add 3 parts of grout to 1 part of clean water and mix well to obtain a smooth and uniform paste using mechanical means.



APPLICATION

1. Pack the joints using a grout float or rubber squeegee ensuring that they are completely filled. Remove as much excess grout from the tile surface as possible

Allow about 15 minutes for the grout to dry. Using a damp sponge, clean the tile surface diagonally to the joint lines.

2. Finally wash down with clean water and sponge to remove any dried grout film from the tile surface.

Once the grout has sufficiently set within the joints, polish the tile surface with a clean cloth. Alternatively give a final wash down with clean water using a dampened sponge.



NOTE:

- A. Care should be taken to avoid staining of tiles during grouting. This is especially applicable when grouting unglazed floor tiles, quarry tiles with textured surface, etc. Check the potential risk of staining by applying the grout to a few tiles in a small trial area.

After the initial setting of the grout, remove the excess material that may be present on the tile edges with a wet cloth or damp sponge.



- B. The addition of ADMIX GT1 to CEMENT POLYMER GROUT/SUPER GROUT/WIDE JOINT GROUT will enhance adhesion, water-resistance and improves flexibility.

MIXING & APPLICATION

EPOXY GROUT

MIXING

Before commencing grouting, the adhesive bed must be set. The joints must be clean of all adhesive residue, dust or debris. Lightly sponge the tile surface to remove dust & dirt.

The entire contents of PART A and PART B should be poured into a clean mixing vessel and mix to a uniform consistency. Slowly add PART C until the required slump free smooth paste is obtained. Immediately pour the mixed grout onto the working area.



APPLICATION

1. Using a hard rubber grout float, compact the EPOXY GROUT into the joints ensuring that they are completely filled. Work in small areas and remove as much excess from the tile/stone surface as possible. Strike off excess materials diagonally to the grout lines.
2. Between 15 - 60 minutes after application, check for joints to be stiff. Use a scrubber (for rustic & matt finish tiles) or sponge/clean cloth (for smooth tiles) dampened with clean water to scrub the tile surface in a circular motion diagonally to the grout lines in both clock-wise and anti-clock-wise directions.
3. After 12 - 24 hours, clean the tile surface with water and soap solution to remove any epoxy stains.

NOTE :

1. Care should be taken to avoid staining of unglazed tile/stone, quarry textured surface. Check the potential risk of staining by applying the grout to a few tile/stone in a small trial area.
2. If working in food processing/preparation/storage areas, keep tiles/mosaics dry and DO NOT bring floor into service until EPOXY GROUT is hard/cured. Avoid contact between food and tiling for at least 7 days after grouting.



Fill joints using float



Clean off with water and by scrubber



Finish off with a clean sponge

MIXING & APPLICATION

WA D

MIXING

The WA D consistency can be adjusted to suit the application and site conditions by varying the quantity of PART C added to the mixed PART A, PART B and PART D.

Before use shake the contents of PART A and PART B. Add PART B to PART A in a suitable, clean container and thoroughly mix together. Add PART D to the same container and mix thoroughly. If an electric drill mixer is used blend at slow speed (less than 300 rpm). Slowly add the required amount of PART C and mix until it has been dispersed and a uniform colour is achieved. Immediately pour the mixed grout onto the working area.

NOTE :

1. In general, the PART C usage will vary depending on the consistency, temperature, different usage conditions, walls and floors building up of thickness, etc.
2. Grouting at certain points: stiffer consistency required to 'stop' open-ended joints or grout skirting tiles.



APPLICATION

1. Using a grout float or rubber squeegee, compact the mixed grout into the joints ensuring that they are completely filled. Work in small areas and remove as much excess grout from the tile surface as possible. Do not exceed the working time of the grout. Strike off excess materials diagonally to the grout lines.
2. Plug open-ended joints with the stiffer mix to prevent any slumping of the WA D joints from occurring.
3. Between 30 - 45 minutes after application (check for joints to be stiff), use a scrubber dampened with clean water to scrub the tile surface in a circular motion (in both clock-wise and anti-clock-wise directions)
4. Clean the tile surface with a fine sponge, diagonally to the grout lines taking care not to drag the grout from the joints.
5. After 12 - 24 hours, clean the tile surface with water and soap solution to remove any epoxy stains.

NOTE :

Care should be taken to avoid staining tile/stone during grouting. This is especially applicable when grouting unglazed floor tiles/stone, quarry tiles, textured surface, etc. Check the potential risk of staining by applying the grout to a few tile/stone in a small trial area.



Fill joints using float



Clean off with water and by scrubber



Finish off with a clean sponge

HEAVY DUTY IMPREGNATING TILE & STONE SEALER

Solvent based deep penetrating sealer



Benefits

- Seals with a wet look finish
- Stain resistant
- Improves wear resistant of porous tile & stone
- Non-yellowing
- Reduces water permeability
- Enhances the colour of the tile

BEFORE

AFTER

Coverage Estimates

Pack size	Coverage
1 litre	Approx. 5 - 15 m ² /litre/coat depending on porosity

APPLICATION AREAS

Bricks | Stones | Interiors | Exteriors
Concrete tiles | Clay tiles

IMPREGNATING TILE & STONE SEALER

Deep penetrating sealer



Benefits

- Gloss finish
- Stain resistant
- Improves wear resistant of porous tiles & stones
- Allows moisture vapour transmission

BEFORE

AFTER

Coverage Estimates

Pack size	Coverage
500 ml & 5 litres	Approx. 5 - 15 m ² /litre/coat depending on porosity

APPLICATION AREAS

Bricks | Stones | Interiors | Exteriors | Walls | Floors
Concrete Tiles | Clay tiles

FC SS

High performance sealer



Benefits

- Natural look
- Non-yellowing
- Improves the wear resistance of tiles & stones
- Penetrates into nano pores
- Protects tiles & stones against efflorescence & UV rays
- Protection against toughest oils & water based stains
- Durable long lasting "seal"

Before

After



Coverage Estimates

Pack size	Coverage
1 litre & 5 litres	Approximately 10 - 15 m ² /litre/coat, depending on the porosity of the surface

APPLICATION AREAS

Sealing of stones | Engineered stones
Tiles in interior & Exterior situations

35

FC SEALER

Natural Stone Protecting Sealer

Benefits

- Natural look finish
- Penetrates and seals the pores
- Prevents stains and migration of water borne pollutants
- Non-flammable, low VOC & UV resistant
- Easy to use & apply
- Can be used before applying tile joint grout to prevent staining of tile edges
- Color will not change when applied on stone or tile

Before

After



Coverage Estimates

Pack size	Coverage
5 litres & 20 litres	Approx. 80 sft depending on the porosity of the substrate

APPLICATION AREAS

Wire cut Bricks | Natural Stones & Tiles
Ceramic & Cement Tiles | Interiors & Exteriors

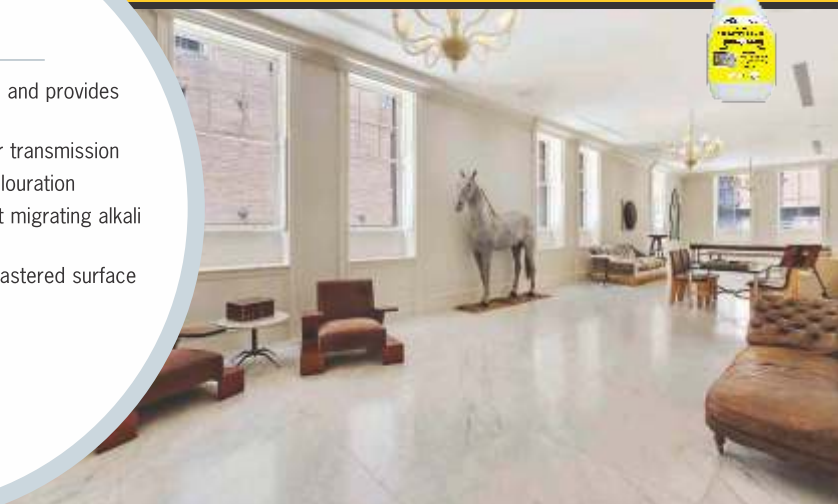
UNDER TILE & STONE PRIMER

Water based under tile & stone primer to prevent efflorescences



Benefits

- Prevents efflorescence and provides water resistance
- Allows moisture vapour transmission
- Prevents surface discolouration
- Efficient barrier against migrating alkali & minerals
- Applied on concrete/plastered surface as primer/sealer



Coverage Estimates

Pack size
500 ml &
5 litres

Coverage

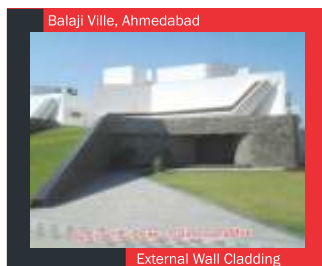
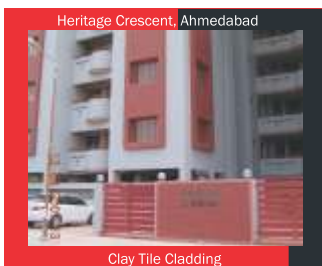
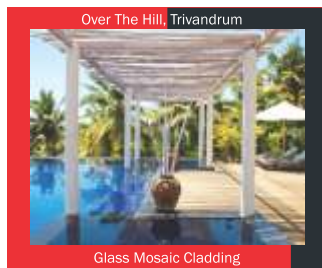
Approximately 10 - 15 m²/ litre/coat
depending on porosity

APPLICATION AREAS

Natural Stones & Tiles | Plastered walls
Concrete surfaces

36

REFERENCES



CP FITTINGS & SANITARY CLEANER (I)

Cleaner for chromium plated fitting & sanitary wares

Benefits

- Effective cleaner for CP fittings & sanitary wares
- Removes scaling developed due to hard water
- Removes stains & lime scale with ease
- Based on surfactant to protect chrome plated fittings

Cleaner for
Sparkling
taps and kitchen sink



Coverage Estimates

Pack size
500 ml & 5 litres

APPLICATION AREAS

Bath fittings | Bath accessories | Kitchen sinks
Wash basins | Chrome plated articles

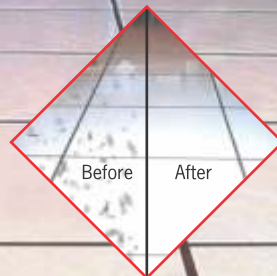
37

HEAVY DUTY TILE CLEANER

Cleaner for removal of cement stains

Benefits

- Removes cement film
- Removes residues, efflorescence and most oxide stains
- Fast acting



Coverage Estimates

Pack size
500 ml & 5 litres

APPLICATION AREAS

Ceramic | Vitrified tiles | Interiors & Exteriors

NON ACIDIC CLEANER

Non acidic wall & floor tile/stone cleaners



Benefits

- Removes dirt, grease from tiled surface
- Provides hygienically clean surroundings
- Fast acting
- Anti-bacterial
- Shield against MICROBE



Coverage Estimates

Pack size
500 ml

APPLICATION AREAS

Tiles | Natural stones

38

MARBLE & STONE CLEANER

Highly effective cleaner for everyday maintenance



Benefits

- Effective against lime scales
- Economical general purpose cleaner
- Mild enough to use on porous tiles/stones
- Daily maintenance



Coverage Estimates

Pack size
500 ml & 5 litres

APPLICATION AREAS

Tiles | Stones | Sanitary ware | Bathtubs

POWER CLEAN

Cleaner for stained tiles and sanitaryware



Benefits

- Powerful formula
- Fast acting
- Easy to apply
- Removes stains easily
- Does not affect the glaze of the applied surface
- Does not damage the grout applied between the tiles

Coverage Estimates

Pack size

1 litre, 5 litres

APPLICATION AREAS

Tiled floors and walls | Bathtubs | Wash-basins
Toilets | Kitchens

WPM 004

Acrylic modified flexible cementitious waterproof coating



Benefits

- Flexible - Accommodates minor cracks
- Resists UV rays - Protect the concrete from long term weathering
- Suitable for use as exposed waterproof membrane on non accessible roofs
- Water based - Safe to use, low odour
- Good bond to cementitious substrates
- Non toxic - Can be safely used as internal waterproofing of potable water tanks
- Self primed - No additional primer required

Coverage Estimates

Pack size	Coverage (20kg Kit)
4kg & 20kg	Approx. 14 m ² @ 0.8 - 1.0 mm DFT for two coats by roller/brush

APPLICATION AREAS

Roof waterproofing | Toilet walls & floors
Chejjas & balconies | Water tanks

40

WPM 004 FLEX

High performance acrylic reinforced waterproof coating



Benefits

- Flexible: accommodates normal building movements and hairline cracks
- Resists both positive and negative pressure
- UV stable: Can be left exposed
- Water based: safe to use, low odour & easy cleaning
- Excellent bond to concrete, masonry, ceramics and most common substrates
- Self primed: No additional primer required
- Non toxic: Can be safely used as internal waterproofing of potable water tanks
- Allows water vapour to escape from the substrate

Coverage Estimates

Pack size	Coverage
42kg	Approx. 24m ² /pack in two coats @ DFT of 0.6mm/coat

APPLICATION AREAS

Fibre Cement Board, Plasterboard, Plywood, Particle Board
Swimming Pools | Wet areas & commercial kitchens
Terraces and Balconies | Retaining walls | Water tanks

WPM 002

Two component undertile waterproofing membrane



Benefits

- Advanced acrylic - will not re-emulsify
- Microfibres liquid reinforced - high tensile strength
- Highly flexible - accommodates building movements
- Water based - safe to use, low odour
- Suitable as an undertile waterproofing membrane
- Fully compatible with polymer modified tile adhesives
- Low VOC content - meets Green Building Council of Australia Green Star IEQ-13 requirements



Coverage Estimates

Pack size	Coverage
40kg	Approx. 16 - 24m ² @ 1.0mm - 1.2mm DFT for 2 coats

APPLICATION AREAS

Terraces & Balconies | Swimming pools | Podiums
Toilets & baths | Dry walls

41

WPM 300

Water based Epoxy membrane



Benefits

- Non toxic - suitable for internal waterproofing of potable water tanks
- Water resistant, prevents rising dampness, efflorescence and withstands hydrostatic pressure
- Non flammable
- Excellent adhesion properties
- Can be applied to damp surfaces and freshly laid concrete
- Water based - safe to use, low odour



Coverage Estimates

Pack size	Coverage
1 litre & 20 litres	Approx. 1.5m ² /ltr in 2 coats @ 600 microns WFT

APPLICATION AREAS

Water Tanks | Internal & External damp walls before painting | Maintenance works

WPM 310

Elastomeric, UV stable, flexible external facade coating



Benefits

- Flexible - accommodates normal building movements
- UV Stable - Provides long term protection
- Reflects the intense solar heat with an Solar Reflectance Index (SRI) of 103
- Water based - safe to use, low odour
- Decorative - available in colours



NR Royal Manor, Bengaluru

Coverage Estimates

Pack size	Coverage
15 litres	Approx. 24m ² /pack @ 0.3mm DFT in 2 coats

APPLICATION AREAS

External Facade

42

E 160

Integral waterproofing liquid for concrete and mortar



Benefits

- Minimizes the permeability and increases the waterproofing properties of the concrete and cement mortar
- Minimized shrinkage cracks in concrete and plaster
- Improves the concrete, cement mortar workability
- Improved surface finish
- Good water reduction helps to improve durability
- Complies as per IS 2645-2003 Standards



E 160

Integral Waterproofing Liquid for concrete and mortar

The compressive strength & setting time complies as per IS 2645-2003 Standards

IS 2645



Coverage Estimates

Pack size
200ml, 1 litre, 5 litres, 20 litres & 200 litres

APPLICATION AREAS

Sunken slab | Terrace slab | Underground water tanks
Over head tanks | Roof slabs and cement screeds/mortar
Basements | Bathroom floors | External plastering | Sumps and drains

E 125

Acrylic copolymer based admixture,
bonding agent and waterproof coating



Benefits

- Water resistant
- Improved flexibility and tensile strength, allowing mortars to be applied in thinner sections.
- Excellent bond with cementitious substrates
- Reduced water demand for equivalent workability.
- Excellent impermeability to water soluble chemicals and salts
- Resistance to penetration of chloride ions and carbon dioxide
- UV stable: Can be left exposed

Pack Size

1 litre, 5 litres & 20 litres

APPLICATION AREAS

Wet areas, kitchens, balconies, terraces | Corrosion protection to reinforcement bars | Patching mortar for re-profiling

43

E 135

SBR based admixture and polymer bonding agent



Benefits

- Multipurpose usage - admix for screeds, concrete repair and coving
- High performance polymer additive for cement and concrete mixes
- Improves water resistance when used with cement mortar and concrete
- Bonding slurry for screeds & render

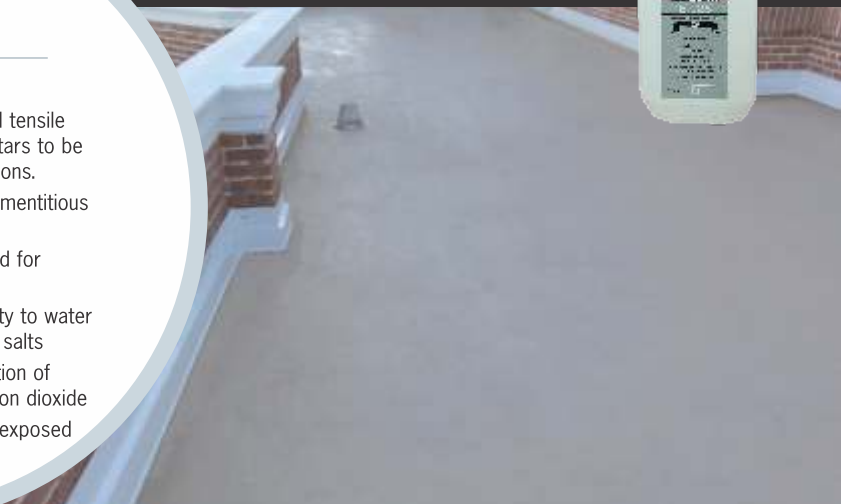
Coverage Estimates

Pack size

1 litre, 5 litres & 20 litres

APPLICATION AREAS

Slurry bond coat for plastering | Admixture for cement mortar and concrete | Coving & Bonding agent for cold joint



B 30

High strength, cementitious, non-shrink precision grout



Benefits

- Suitable for general bore packing and void filling requirements.
- Controlled expansion ensures rigid bond.
- Versatile: can be prepared to be of flowable or pumpable consistency.
- Chloride free: non-corrosive.
- High compressive strength.
- Grouting up to 10mm - 100mm thickness.



Coverage Estimates

Pack size	Yield
25kg	Approx 13 ltrs for 25kg bag

APPLICATION AREAS

Bore packing | Anchor bolts grouting & bulk filling in concrete repair

44

B 33

High build, polymer modified cementitious renovation mortar



Benefits

- Light weight - Suitable for overhead repairs
- Extremely low permeability - provides protection against steel corrosion
- Good bonding to cementitious substrate
- No curing required



Coverage Estimates

Pack size	Coverage
20.60kg	Approx. 1.3 ² m @ 10mm thickness

APPLICATION AREAS

Filling blow holes | Overhead concrete repair
Small localized repair

B 35

Structural grade, polymer modified
cementitious repair mortar



Benefits

- High strength - suitable for structural repair
- Good bond to cementitious substrate
- Shrink free - reduces the risk of cracks
- No curing required



Coverage Estimates

Pack size	Coverage
20.20kg	Approx. 1.0 m ² @ 10mm thickness

APPLICATION AREAS

All types of structural repair
Marine structures repair

45

EP 300

Epoxy bonding agent



Benefits

- Excellent bond strength
- Forms a structural bond between new and old concrete
- Can be applied to damp surfaces
- Excellent adhesion to most substrates



Coverage Estimates

Pack size	Coverage
1kg & 5kg	Approx. 2m ² /kg @ 250 microns

APPLICATION AREAS

Concrete repair | Bonding old & new concrete

EP 410

Two component epoxy zinc rich primer



Benefits

- Corrosion protection to reinforcement
- Good adhesion to the steel reinforcement
- Suitable to be used as a touch-up primer for corroded reinforcement before concrete repair
- Prevents corrosion
- Easy to apply



Coverage Estimates

Pack size	Coverage
500 ml,	Approx. 10 m ² /litre @ 100 microns
1 litre	WFT

APPLICATION AREAS

Reinforcement bars

46

EP 310 F

Fast setting, polyester resin anchoring grout



Benefits

- High early strength
- Tough, shrink-free & strong anchoring
- Vibration resistance
- Resistance to heavy loads
- Corrosion resistance
- Easy to use
- Can be used in wet and damp conditions

*Also available - EP 310 with longer setting time



Coverage Estimates

Pack size	Yield
1kg	Approx. 0.5 litres/pack

APPLICATION AREAS

Anchoring reinforcement bars & bolts | Balustrades
Balcony rails | Foundation Bolts
Reinforcement startup bars | Dowel Bars

SU 10

Single component, polyurethane joint sealant for expansion joints

Benefits

- UV resistant
- Good adhesion to most substrates
- Over paintable
- Weather resistance
- Single component - Easy to use
- No primer required
- Suitable for horizontal & vertical joints



Pack Size

600ml Sausages

APPLICATION AREAS

Filling internal & external expansion joints
Water tanks | Swimming Pools | Metal frames

47

ACF 8

Crack filler paste

Benefits

- Paste form - ready to use
- Flexible - accommodates minor movements in cracks
- Water based - ecofriendly
- Can be over coated after 24 hours
- Excellent adhesion with cementitious surface
- UV resistance



Coverage Estimates

Pack size	Coverage
500g, 1kg &	Approx. 25-30 RMT/kg
5kg	(for 1m X 1m X 5mm crack)

APPLICATION AREAS

Internal and external cracks in
plastered surfaces up to 5mm width

F 30

Crack filler powder



Benefits

- Flexible - Accommodates movements in the cracks.
- Water based stainer can be mixed to match the adjacent surface.
- Can be over coated after curing.
- Non shrink.
- Excellent Adhesion.
- Single component just mix water



Coverage Estimates

Pack size	Coverage
1kg	Approx. 18 RMT/kg (for 5 mm X 5 mm crack)

APPLICATION AREAS

Repairing of internal and external cracks in plastered surfaces up to 5mm width

48

A 803

White cement based wall putty



Benefits

- Smooth finish
- Good bond strength
- Better adhesion and durability
- Can be applied on moist surface
- No curing required
- Ideal base for paints, distempers and coatings
- Easy mixing and spreading
- For interior and exterior surfaces



Coverage Estimates

Pack size	Coverage
2kg, 20kg & 40kg	Approx. 1.5 - 2.0 m ² /kg

APPLICATION AREAS

Concrete | Plastered walls & ceilings
Pre-cast walls | AAC Blocks



A 45

Rapid Drying and Hardening Internal Repair Mortar

Benefits

- Receives finishes after 90 minutes regardless of thickness
- Slump free: ideal for vertical, horizontal and overhead repairs
- Ideal for the rapid repair works
- Binds the mixed water within the mortar, speeding drying and hardening times



Coverage Estimates

Pack size	Coverage
11kg	Approx. 7 m ² @ 1 mm thick (7 litres of mortar)

APPLICATION AREAS

Repairing and refacing concrete
Filling and patching cracks

Benefits

- Floorcoverings can be installed after as little as 15 minutes
- True feather edge allows for greater coverage
- Cost effective
- Exceptional bond without the need to prime
- Easy to mix and apply, just add water
- Can be applied at a minimal thickness

FEATHER FINISH

Rapid Drying Patching and Smoothing Compound



Coverage Estimates

Pack size	Coverage
10kg	Approx. 45m ²

APPLICATION AREAS

Plywood | Cement/sand screeds | Existing sub-floor

OUR VALUED CLIENTELE

PROJECT

PLACE

APPLICATION

Residential

JUSCO	Jamshedpur	Swimming Pool Tiling
Vasant Oasis, Sheth Group	Mumbai	Epoxy Grout in dome
Sahara Amby Valley	Pune	Swimming Pool - Grouting
Magar Farmhouse, Magarpatta City	Pune	Wet Area Waterproofing
Srila Towers	Hyderabad	Tiling & Grouting
Jalavihar	Hyderabad	Glass Mosaic Tiling & Grouting
Vishwapriya	Bangalore	Tile / Stone Care, Sealers on Clay Tile
Embassy Boulevard	Bangalore	Wet Area Waterproofing
Orchid Woods	Bangalore	Wet Area Waterproofing
Bangalore One West, Phoenix	Bangalore	Wet Area Waterproofing

Commercial

Ansal Plaza Mall	Ludhiana	Internal Tiling & Epoxy Grouting
Western Mall	Ludhiana	Epoxy Grouting
Gold Gym	Lucknow	Internal Tiling
Iscon Mall	Ahmedabad	External Cladding
Prerana Bazaar	Ahmedabad	External Cladding
Dev Arcade	Ahmedabad	External Cladding
ICICI Prudential	Mumbai	Vitrified on Mosaic
Inorbit Mall	Mumbai	Epoxy Grouting on Floor
Ruby Terrace	Mumbai	External Granite Cladding
UB City	Bangalore	Glass mosaic fixing & Grouting
Food Court @ Philips	Bangalore	Granite fixing
Empire Mall	Mangalore	Internal tiling & Epoxy Grouting
THE HINDU - News paper	Trichy	Granite Cladding & Epoxy Grouting
Decathlon Sports Complex	Bangalore	Terrace Waterproofing

IT, ITES & Institutional

Infosys	Chandigarh	Internal Tiling & Grouting
Kurukshetra University	Kurukshetra	Epoxy Grouting
Shani Mandir	Indore	Granite Cladding & Vitrified Tiling
Indore Public School	Indore	Glass mosaic Tiling & Epoxy Grout
Maharshi Vidya Mandir	Bhopal	External & Internal marble Tiling
DLF IT	Rajarahut	External Floor Grouting
AIR INDIA	Mumbai	Vitrified on Mosaic
Infosys Phase 2	Pune	Grouting
United Bank of Switzerland	Hyderabad	Tile on Wood
LIC	Vizag	Tile on Tile
Bhasyam School	Vizag	Wall Cladding
Accenture	Bangalore	Vitrified Tiling, Wet Area Waterproofing
Bosch - IT Park	Bangalore	Water tank Waterproofing
JP Morgan	Bangalore	Water tank Waterproofing
Google Tower	Gurgaon	Wet Area Waterproofing
Honeywell	Gurgaon	Terrace Waterproofing
ISKCON	Mysore	Granite cladding
Global Esoft system	Mangalore	Epoxy Grouting
Agadi Engg College	Laxeshmeshwar	Vitrified Tiling on IPS Flooring
Tamil Nadu News Print	Karur	Industrial & Vitrified Tiling

OUR VALUED CLIENTELE

PROJECT	PLACE	APPLICATION
Regional Engineering College	Trichy	Tile on Wood & Grouting
WIPRO	Ernakulam	Granite Cladding
HDFC Bank	Ernakulam	Vitrified Tile on Cement Floor
Santhigiri Ashram	Trivandrum	External Marble cladding, Epoxy Grouting & Sealers
South City International School	Kolkata	External Cladding with Gold Star

Hospitals

Neotia Hospital	Kolkata	Epoxy Grouting
Leelavati Hospital	Mumbai	Epoxy Grouting on Floor
Mallikarjun Hospital	Solapur	Tile on Tile & Grouting
Indo American Cancer Institute	Hyderabad	Internal Tiling & Epoxy Grouting
Chaitanya Nursing Home	Vijayawada	Granite Elevation
Devi Nursing Home	Vijayawada	Vitrified and Granite Tiling
Chettinad Hospital & Research Centre	Chennai	Epoxy Grouting
Sanjeevani General Hospital	Madurai	Vitrified Cladding
Medical Trust Hospital	Ernakulam	Tile on Tile
Vassan Eye Care Hospital	Ernakulam	Tile on Mosaic
Korambayil Nursing Home	Manjeri	Tile on Mosaic
KIMS Hospital	Trivandrum	External Clay Tile Cladding
Sassoon Hospital	Pune	Wet Area Waterproofing

Hotels, Hospitality & Recreational

Heritage Village	Manaser	Glass Mosaic Tiling & Grouting
Lifestyle Hotel	Siliguri	Vitrified Tiling
ITC- Grand Maratha	Mumbai	Marble Fixing, Wet Area Waterproofing
Andheri Sports Complex	Mumbai	Vitrified tiles in Swimming pool
Leela Hotel	Mumbai	Epoxy Grouting in Kitchen
Baywatch Resort	Goa	Glass Mosaic Tiling
Taj Holiday Village	Goa	Tiling & Grouting in Swimming Pool
Grand World Resort	Tirupati	Tiling & Epoxy Grouting
Hotel Mallige	Hubli	Tile on Wood
Sabaree International	Karur	Granite Cladding
Lee Garden Hotel	Kumbakonnam	Granite Cladding
Hotel Grand Plaza	Coimbatore	Granite Cladding
Middle East Hotel	Ernakulam	Vitrified Tile Cladding
Hotel Gokulam Park inn	Ernakulam	Tile on Wood
Park Grandeur, Pride Group	Pune	Wet Area Waterproofing
Crescent Water Park	Indore	Swimming Pool Waterproofing & Tiling
Hotel Marriott	Indore	Tile on Tile

Showrooms

Reliance Fresh, All outlets	Jaipur	Vitrified Tiling & Grouting
Khadi Gramodyog, All outlets	Jaipur	Vitrified Tiling & Grouting
Pantaloon Showrooms	Jaipur	Tile on Wood
Mercedes Benz Showroom	Lucknow	Epoxy Grouting
Audi Car Showroom	Lucknow	Epoxy Grouting
Honda Abhikarn	Indore	Vitrified Tiling & Epoxy Grouting
Jaquar Fittings Showroom	Bangalore	Marble on Wood
Maruti car showroom	Mangalore	Epoxy Grouting

OUR VALUED CLIENTELE

PROJECT

PLACE

APPLICATION

Joy Alukkas Jewellery
ARRS Silks
Peter England Showroom
TVS & Honda Show room

Salem
Salem
Chennai
Coimbatore

Internal Tiling & Grouting
Tile on Marble
Tile on Wood
Tile on Tile & Epoxy grouting

Production & Manufacturing

Torrent Pharma
Reckitt Benckiser (I) Ltd.
Nestle India Ltd
Devans Modern Breweries Ltd
Instyle Exports
Brindavan Beverage Pvt Ltd
Hindalco Industries Limited
Omkareshwar Hydro Electric Power
Meteorological Products Ltd
Amul
Devi's Laboratories Limited
SAB Miller
Crystal Pharma
Kasturi Estate Pvt Limited
Nokia Factory
Suguna Poultry Chicken
K P R Cotton Mills
International Food Processing Unit
Kochi Refinery Ltd

Baddi
Uttranchal
Rudrpur
Haryana
Manaser
Lucknow
Renukoot
Indore
Mumbai
Tarapur
Vizag
Bangalore
Hubli
Chennai
Chennai
Coimbatore
Coimbatore
Dindigul
Ambalamughal

Epoxy Grouting
Industrial Tiling & Epoxy Grouting
Industrial Tiling
Industrial / Vitrified Tiling & Epoxy Grouting
Vitrified Tiling & Epoxy Grouting
Tilling & Epoxy Grouting
Internal Tiling
Industrial Tiling & Epoxy Grouting
Granite Cladding on Wall
Epoxy Grouting in Cold storage area
Epoxy Grouting
Epoxy Grouting for Industrial Tiles
Epoxy Grouting
Internal Industrial Tiling
Tile on Wood
Wall Cladding & Epoxy Grouting
Industrial & Vitrified Tiling
Vitrified Tiling & Epoxy Grouting
Tile on Mosaic

Airports

Chandigarh International Airport
Sardar Vallabhbhai Patel International Airport
Surat Airport
Chhatrapati Shivaji International Airport (T1 & T2)
Dr. Babasaheb Ambedkar International Airport
Pune Airport
Mangalore Airport
Chennai International Airport
Kempegowda International Airport

Chandigarh
Ahmedabad
Surat
Mumbai
Nagpur
Pune
Mangalore
Chennai
Bangalore

Epoxy Grouting
Internal Tiling
Internal Tiling
Vitrified tile on Kota stone
Vitrified tile on Kota stone
Vitrified tile on Kota stone & Epoxy Grouting
Tile on Tile & Grouting
Epoxy Grouting & Internal Tiling
Under Tile primer, Stone fixing & Sealer

Government Bodies

Australian High Commission
Indian Military Academy
RBI
SBI
AWHO
ICCR
ONGC
SBI
SBI
Navel Academy Project
Income Tax Staff Quarters
NAL

New Delhi
Dehradun
Jaipur
Kolkata
Kolkata
Kolkata
Mangalore
Kumbakonnam
Trichy
Kannur
Baroda
Bangalore

Vitrified Tiling / Stone Fixing
Vitrified Tiling
Tile on Tile & Grouting
Vitrified Tiling
Vitrified Tiling
Vitrified Tiling & Epoxy Grouting
Tile on Mosaic
Vitrified Tiling & Grouting
Vitrified Tiling & Grouting
Glass Mosaic Cladding
Tile on Tile
External facade waterproofing

Core Product Categories



TILE & STONE INSTALLATIONS



WATERPROOFING SYSTEMS



FLOORING
SOLUTIONS



FLOORING ADHESIVES



CONCRETE REPAIR,
ANCHORS & GROUTS



DECORATIVE FINISHES

Notes :

[illegible]

Notes :



ARDEX ENDURA (INDIA) PRIVATE LIMITED

an ISO 9001:2015 & ISO 14001:2015 certified company

Corporate & Regd. Office: Unit No. 406 & 407, "Brigade Rubix" No. 20, HMT Campus,
Yeshwanthpur Hobli, Bengaluru - 560013. CIN No: U24233KA1997PTC022383 Tel: +91 80 66746500

Email: customercare@ardexendura.com Website: www.ardexendura.com

Branches.....

• AHMEDABAD	+919824019132	• HUBBALLI	0836 2970505	• NAGPUR	+919822223743
• AURANGABAD	+918605445577	• HYDERABAD	040 27650293	• PATNA	+919934687909
• BENGALURU	+919972922333	• INDORE	0731 4021148	• PUNE	+919881249292
• BHUBANESHWAR	0674 2578101	• JAIPUR	0141 2392993	• RAIPUR	0771 4038300
• CALICUT	0495 2740334	• KOLKATA	+919831071084	• SALEM	0427 2211454
• CHENNAI	044 42805544	• LUCKNOW	0522 4043251	• SHIVAMOGGA	+919880605770
• DELHI	+919810603431	• LUDHIANA	0161 2532170	• TRICHY	0431 6454649
• ERNAKULAM	0484 2341044	• MANGALURU	0824 2442176	• TRIVANDRUM	0471 2598648
• GOA	0832 2750992	• MUMBAI	022 65133299	• VIJAYAWADA	+918688354587
• GUWAHATI	+917896002188	• MYSURU	0821 2570171	• VISAKAPATNAM	0891 6469499