



www.ardexendura.com



Perfect choice for
Tile & Stone Installations

Tile Adhesives

BRONZE STAR



General purpose tile adhesive

- Suitable for fixing porous clay & ceramic tiles
- Dry areas, interior - walls & floors
- Confirms with IS 15477: 2019 Type 1T
- Open time of 10mins

Pack size - (Grey) 20kg

SILVER STAR



Polymer modified adhesive

- Suitable for fixing ceramic tiles
- Dry areas, toilets & bathrooms interior - walls & floors
- Confirms with IS 15477: 2019 Type 1T
- Confirms with EN 12004: 2017 C1T
- Open time of 15mins

Pack size - (Grey) 2kg, 20kg & 50kg
(White) 20kg & 50kg

SILVER STAR *Plus*



High polymer modified, tile/stone adhesive

- Suitable for vitrified tiles & natural stones
- Interior - walls & floors, exterior - floors showers & swimming pools
- Confirms with IS 15477: 2019 Type 2T
- Confirms with EN 12004: 2017 C1T
- Open time of 20mins

Pack size - (Grey) 20kg

GOLD STAR



High polymer modified tile/stone adhesive

- Suitable for vitrified tiles & natural stones
- Toilets, bathrooms & water bodies, Interior - walls & floors, exterior - floors
- Confirms with IS 15477: 2019 Type 2T
- Confirms with EN 12004: 2017 C1T
- Open time of 20mins

Pack size - (Grey) 2kg, 20kg & 50kg

WHITE STAR



High polymer modified tile/stone adhesive

- Suitable for light colour natural stones
- Dry areas, toilets, bathrooms, water bodies interior - walls & floors, exterior - floor
- Confirms with IS 15477: 2019 Type 2T
- Confirms with EN 12004: 2017 C1T
- Open time of 20mins

Pack size - (White) 20kg & 50kg

DIAMOND STAR



High performance, polymer modified, non-slip adhesive

- Suitable for fixing glass mosaic, vitrified & natural stones, tile on tile
- Water bodies, swimming pools, claddings interior & exterior - walls & floors
- Confirms with IS 15477: 2019 Type 3T
- Confirms with EN 12004: 2017 C2TE
- Open time of 30mins

Pack size - (Grey) 20kg & 50kg
(White) 2kg, 20kg & 50kg

PLATINUM STAR *Plus*



High performance, fibre reinforced, deformable tile/stone adhesive

- Fixing large format & slim tiles, stable natural stones
- Dry walls, cementitious substrate, interior & exterior - walls & floors
- Confirms with IS 15477: 2019 Type 4TS1
- Confirms with EN 12004: 2017 C2TES1
- Open time of 35mins

*Note: Use ADMIX AD2 to enhance performance criteria from S1 to S2

Pack size - (Grey / White) 20kg

S 15 C



Cement based adhesive for use by wet-on-wet method

- Suitable for fixing vitrified tiles, ceramic tiles and stable natural stones
- Slurry adhesive for fixing tiles on fresh screed
- Domestic and commercial floors interior & exterior - floors,
- Open time of 20 to 25mins

Pack size - (Grey / White) 20kg

FLEX



Two component, flexible adhesive for wood/metal surface

- Suitable for wood & metal surface, dry walls
- Dry & wet areas, showers, interior & exterior - walls & floors
- Confirms with IS 15477: 2019 Type 4S2
- Confirms with EN 12004: 2017 C2ES2
- Open time of 30mins

Pack size - Grey (15.41kg), White (12.50kg)

ArdiFlex PU 5



Modified polyurethane multipurpose adhesive

- For fixing moisture sensitive stones like artificial/agglomerated marble & natural stone
- Suitable for challenging and wide range of applications
- Dry & wet areas, metal & wooden PVC interiors & exteriors - walls & floors
- Confirms with IS 15477: 2019 Type 5TS2
- Confirms with EN 12004: 2017 R2T
- Open time of ≥65mins

Pack size - (White) 4kg

ADMIX AD1



Liquid polymer additive (for use with cement based adhesives)

- Polymer additive for use with cement based adhesives to enhance the properties and performance.
- Improves flexibility & water resistance
- Increases adhesion
- Suitable for submerged conditions

Pack size - 1 & 5litres

FR



Acid-proof lining, adhesive and grout

- Suitable for acid proof tile fixing and grouting on concrete substrate
- High temperature resistance from -80 C to 165 C
- Suitable as adhesive (bed thickness upto 6mm) and as grout (joint width from 1-12mm)
- Working time of 20mins

Pack size - 4kg

Tile Joint Grouts

Tile & Stone Care - Cleaners



High performance three component epoxy tile grout

- Suitable for joint width of 1 - 12mm
- Built-in Microban® antifungal protection
- Available in range of colours
- Provides high strength and durable joints
- Dry areas, bathrooms, swimming pools commercial spaces, hygienic areas, chemical resistance areas
- Exceeds EN 13888 standards

Pack size - 1kg & 5kg



High performance two component epoxy tile grout

- Suitable for joint width of 1 - 15mm
- Built-in Microban® antifungal protection
- Available in range of colours
- Provides high strength and durable joints
- Dry areas, bathrooms, swimming pools commercial spaces, hygienic areas, chemical resistance areas
- Exceeds EN 13888 standards

Pack size - 1kg & 5kg



High performance epoxy grout with SPARKLING effect

- Decorative
- Suitable for joint width of 2 - 20mm
- Available in Gold, Silver & Bronze colours
- Showrooms, shopping malls, commercial spaces, multiplex restaurants & hotels

Pack size - 1kg & 5kg



Polymer modified grout for wall & floor tile joints

- Suitable for joint width of 1 - 6 mm
- For joint widths >6mm upto 12mm use Ardex Endura **Wide Joint Grout** or add ADMIX GT1
- Available in range of colours
- Dry areas, toilets, bathrooms, swimming pools*
- Conforms to overall migration test specifications as per USFDA - 175.300, certified by CFTRI
- *To be used with ADMIX GT1

Pack size - 500g, 1kg & 10kg



High polymer modified, water & stain resistant grout

- Suitable for joint width of 1 - 6 mm
- For joint widths >6mm upto 12mm use Ardex Endura **Wide Joint Grout** or add ADMIX GT1
- Available in a range of colours
- Good bond strength & stain resistant
- Dry areas, toilets, bathrooms, commercial spaces, swimming pools*
- Conforms to overall migration test specifications as per USFDA - 175.300, certified by CFTRI

*Can be admixed with ADMIX GT1

Pack size - 1kg



Liquid polymer additive for use with cement based grouts

- Improves the flexibility for cement polymer grouts, super grouts & wide joint grouts
- Improves water resistance & adhesion strength
- Increase the abrasion resistance of grouts
- As an admix for any cement based tile joint grout

Pack size - 100ml & 1litre



Cleaner for chromium plated fitting & sanitary wares

- Removes scaling developed due to hard water
- Removes stains & lime scale with ease
- Bath fittings, bath accessories, kitchen sinks, wash basins & chrome plated articles

Pack size - 500ml & 5litres



Cleaner for removal of cement stains

- Removes cement film
- Removes residues, efflorescence and most oxide stains
- For ceramic tiles

Pack size - 500ml & 5 litres



Non acidic wall & floor tile/stone cleaners

- Removes dirt, grease and stains from tiled surface
- Provides hygienic clean surrounding
- Anti - bacterial
- Shield against MICROBES
- Tile/stone cleaner

Pack size - 500ml



Highly effective cleaner for everyday maintenance

- Effective against lime scales
- Mild enough to use on porous tiles/stones
- Daily maintenance
- Tiles, natural stones

Pack size - 500ml & 5litres



Cleaner for stained tiles and sanitaryware

- Removes stains easily
- Does not affect the glaze of the applied surface
- Does not damage the grout applied between the tiles
- Tiled floors and walls, Bathtubs, Wash-basins, Toilets & Kitchens

Pack size - 1litre & 5litres

Link to website



Tile & Stone Care - Sealers

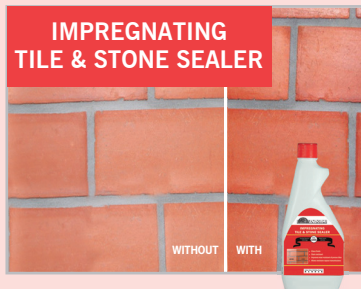


HEAVY DUTY IMPEGNATING TILE & STONE SEALER

Solvent based deep penetrating sealer

- Seals with a WET look finish
- Improves wear resistant of porous tile & stone
- Reduces water permeability
- Enhances the colour of the tile
- Usage on bricks, concrete tiles, clay tiles natural stones & ceramic tiles

Pack size - 1litre



IMPEGNATING TILE & STONE SEALER

Deep penetrating sealer

- Gloss finish
- Improves wear resistant of porous tiles & stones
- Allows moisture vapour transmission
- Bricks, stones, interiors, exteriors walls, floors, concrete tiles & clay tiles

Pack size - 500ml & 5litres



FC - SS

High performance sealer

- Nano pore sealer with NATURAL look
- Flurochemical technology
- Non-yellowing & Hydrophobic/oleophobic
- Durable long lasting "seal"
- Applications for sealing of stones, marble, slate, sand stone, terrazzo porous tiles & grouted joints

Pack size - 1litre & 5litres



FC SEALER

Natural stone protecting sealer

- NATURAL look
- Penetrates and seals the pores
- Prevents stains and migration of water borne pollutants
- Wire cut bricks, natural stones & cement tiles, interiors & exteriors
- For optimum performance dip/coat all sides of the natural stone

Pack size - 5litres & 20litres



UNDER TILE & STONE PRIMER

Water based under tile & stone primer

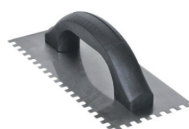
- Prevents efflorescence and provides water resistance
- Prevents surface discolouration
- Efficient barrier against migrating alkali & minerals
- Applied on concrete/plastered surface as primer/sealer before painting
- Bottom face of natural stones

Pack size - 500ml & 5litres

Complimentary Products

M 15 Pack size - 26kg	Thin bed polymer modified water resistant adhesive for AAC blocks	AAC block work
E 160 Pack size - 200ml, 1litre, 5litres & 20litres	Integral waterproofing liquid for concrete and mortar	Sunken slab, terrace slab, underground water tanks Overhead tanks, roof slabs and cement screeds/mortar basements, bathroom floors, external plastering, sumps and drains
E 135 Pack size - 1litre, 5litres & 20litres	SBR based admixture and polymer bonding agent	Slurry bond coat for plastering, admixture for cement mortar And concrete, coving & bonding agent for cold joint
B 30 Pack size - 5kg & 25kg	High strength, cementitious, non-shrink precision grout	Bore packing, anchor bolts grouting & bulk filling in concrete repair
WPM 004 Pack size - 4kg & 20kg	Acrylic modified flexible cementitious waterproof coating	Roof waterproofing, toilet walls & floors, chejjas & balconies Water tanks
WPM 004 Flex Pack size - 10kg & 42kg	High performance acrylic reinforced waterproof coating	Wet areas & commercial kitchens, terraces and balconies, retaining walls, water tanks, swimming pools (suspended and below ground)

Tools & Tackles For Adhesives & Grouts



6mm x 6mm
Square notch trowel



12mm x 12mm
Square notch trowel



Grout Rake



Spacers
2,3,4,5,8 & 10mm



ARDEX ENDURA (INDIA) PRIVATE LIMITED
an ISO 9001:2015 & ISO 14001:2015 certified company

Corporate & Regd. Office: Unit No. 406 & 407, "Brigade Rubix" No. 20, HMT Campus, Yeshwanthpur Hobli, Bengaluru - 560013.
CIN No: U24233KA1997PTC022383 Tel: +91 80 66746500 Email: customercare@ardexendura.com Website: www.ardexendura.com

Branches

AHMEDABAD: +919228019132 • AURANGABAD: +918605445577 • BENGALURU: +919972922333 • BHUBANESHWAR: 0674 - 2578101 • CALICUT: 0495 - 2460334 • CHENNAI: 044 - 42805544 • DELHI: +919811810923
ERNAKULAM: 0484 - 2341044 • GOA: 0832 - 2750992 • GUWAHATI: +917896002188 • HUBBALLI: 0836 - 2970505 • HYDERABAD: +919703250099 • INDORE: 0731 - 4021148 • JAIPUR: 0141 - 2441893
KOLKATA: +919831071084 • LUCKNOW: 0522 - 4043251 • LUDHIANA: 0161 - 2532170 • MANGALURU: 0824 - 2442176 • MUMBAI: 022 - 65133299 • MYSURU: 0821 - 2570171 • NAGPUR: +919822223743
PUNE: +919881249292 • RAIPUR: 0771 - 4038300 • SALEM: 0427 - 2271454 • TRIVANDRUM: 0471 - 2598648 • VIJAYAWADA: +918688354587 • VISAKAPATNAM: 0891 - 6469499